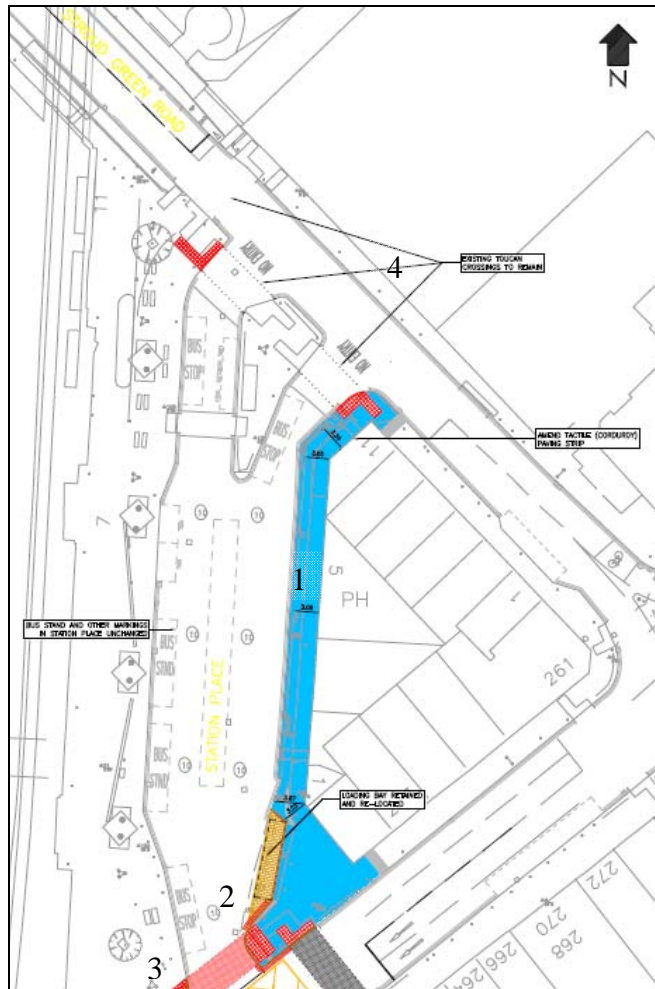


Changes to Station Place

It is currently not possible to cycle southbound through Station Place from the park (Finsbury Park) or Stroud Green Road to St Thomas's Road. Cyclists have to use the one-way gyratory (Stroud Green Road – Blackstock Road – Rock Street), or dismount and walk over the pavement through Station Place.

We would like to allow north and southbound cycling along Station Place by redesigning the space east of the bus station (indicated in blue). We propose to remove the existing designated northbound cycle lane and redesign the space so that north and southbound cyclists share the space with pedestrians.



Key

- 1 Two-way cycling along Station Place, shared with pedestrians
- 2 Raised loading bay so that it can be used by pedestrians and cyclists when no vehicle is loading
- 3 A new toucan crossing replacing the existing pedestrian crossing at the bottom of Station Place (A toucan crossing is a signal controlled crossing for both pedestrians and cyclists)
- 4 Existing toucan crossings retained

Changes to St Thomas's Road

It is currently not possible for cyclists to go southbound along the top end of St Thomas's Road between the junction with Seven Sisters Road and Rock Street. To allow cyclists to go south, we have developed three options:

- A. St Thomas's Road retains its current three lanes of traffic. The existing footway will be repaved and shared by pedestrians and cyclists travelling in both directions.
- B. St Thomas's Road is reduced from three lanes of traffic to two. This space is used to create a wider footway to be shared between pedestrians and cyclists travelling in both directions.
- C. St Thomas's Road is reduced from three lanes of traffic to two. This space is used to create a segregated cycle lane to allow north and southbound cycling.

In all three options the crossing at Seven Sisters Road become a '*toucan crossing*'. A toucan crossing is a signal controlled crossing for both pedestrians and cyclists. The loading bay on St Thomas's Road will be moved in all three options to improve traffic flow.

Traffic Impact

In options B and C, St Thomas's Road will be reduced from three lanes of traffic to two. There are often queues of traffic on St Thomas's Road and Rock Street. We have undertaken detailed traffic assessments (traffic modelling) to understand the traffic situation.

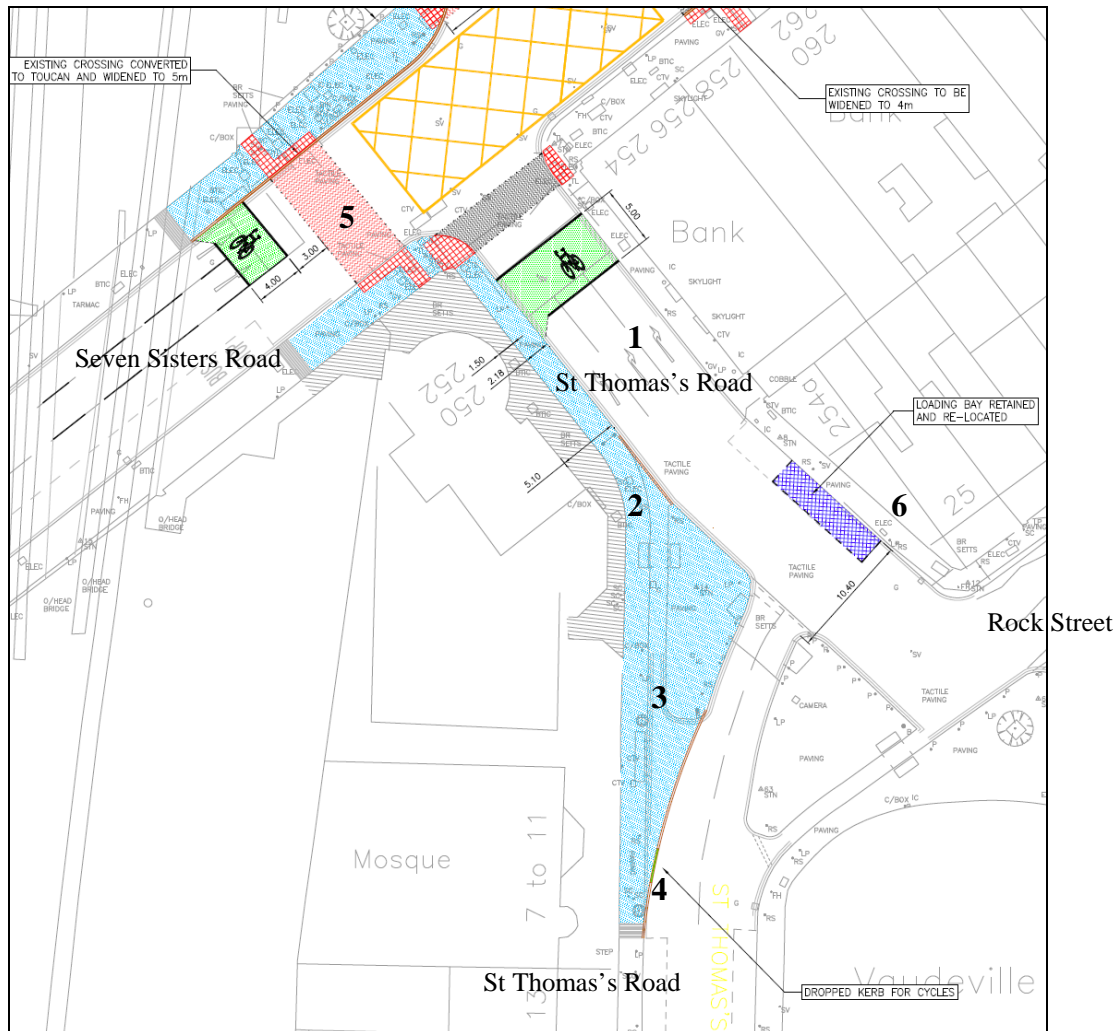
We are proposing the following measures to ensure there is no negative impact on traffic flow:

- Traffic on St Thomas's Road will get more green time
- The bend from Rock Street to St Thomas's Road will be widened so that two vehicles on Rock Street will be able to go around the bend at the same time
- The loading bay will be relocated
- Both traffic lanes on St Thomas's Road allow vehicles to turn right into Seven Sisters Road, reducing the current conflict of vehicles changing lanes.

If you would like to understand this better, please come see us at the exhibition. We will display the traffic model and will be available to answer your questions.

Changes to St Thomas's Road – Option A

St Thomas's Road retains its current three lanes of traffic. The existing footway will be repaved and shared by pedestrians and cyclists travelling in both directions.

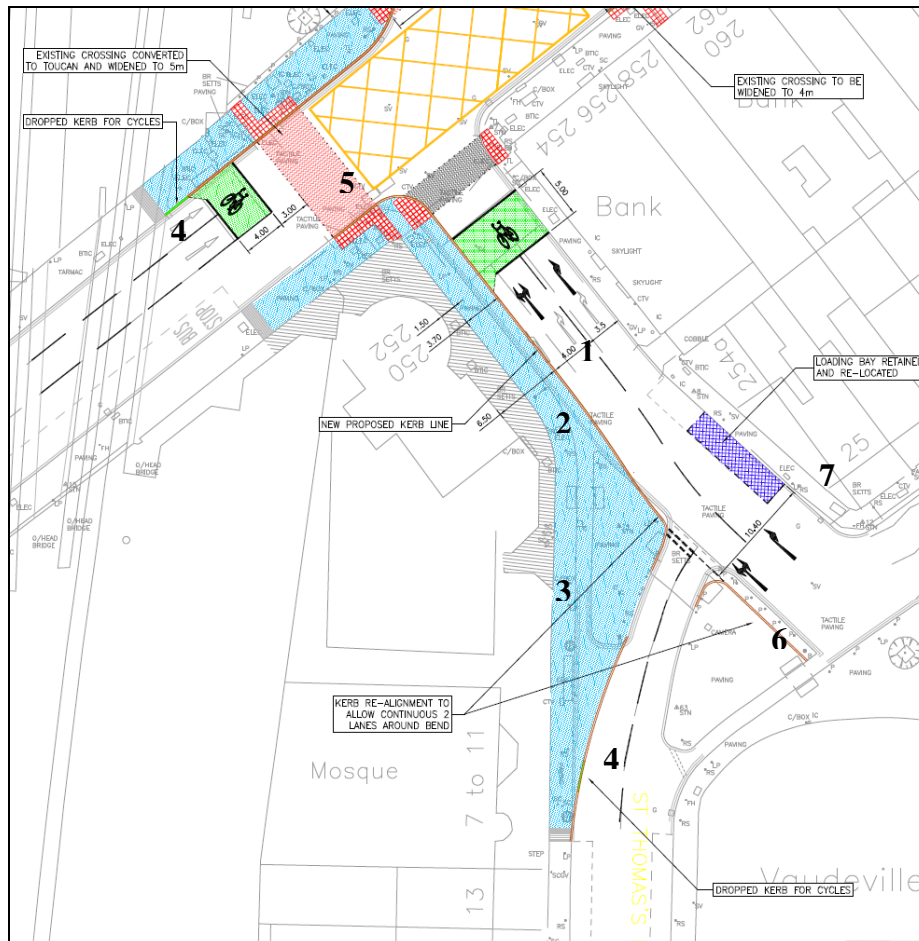


Key

- 1 No changes to existing road layout
- 2 Two-way cycling on St Thomas's Road shared with pedestrians
- 3 Removal of existing northbound cycle lane
- 4 Dropped kerb for cyclists
- 5 Widened pedestrian crossing at Seven Sisters Road to create a toucan crossing
- 6 Relocate loading bay to improve traffic flow

Changes to St Thomas's Road – Option B

St Thomas's Road is reduced from three lanes of traffic to two. This space is used to create a wider footway to be shared between pedestrians and cyclists travelling in both directions.

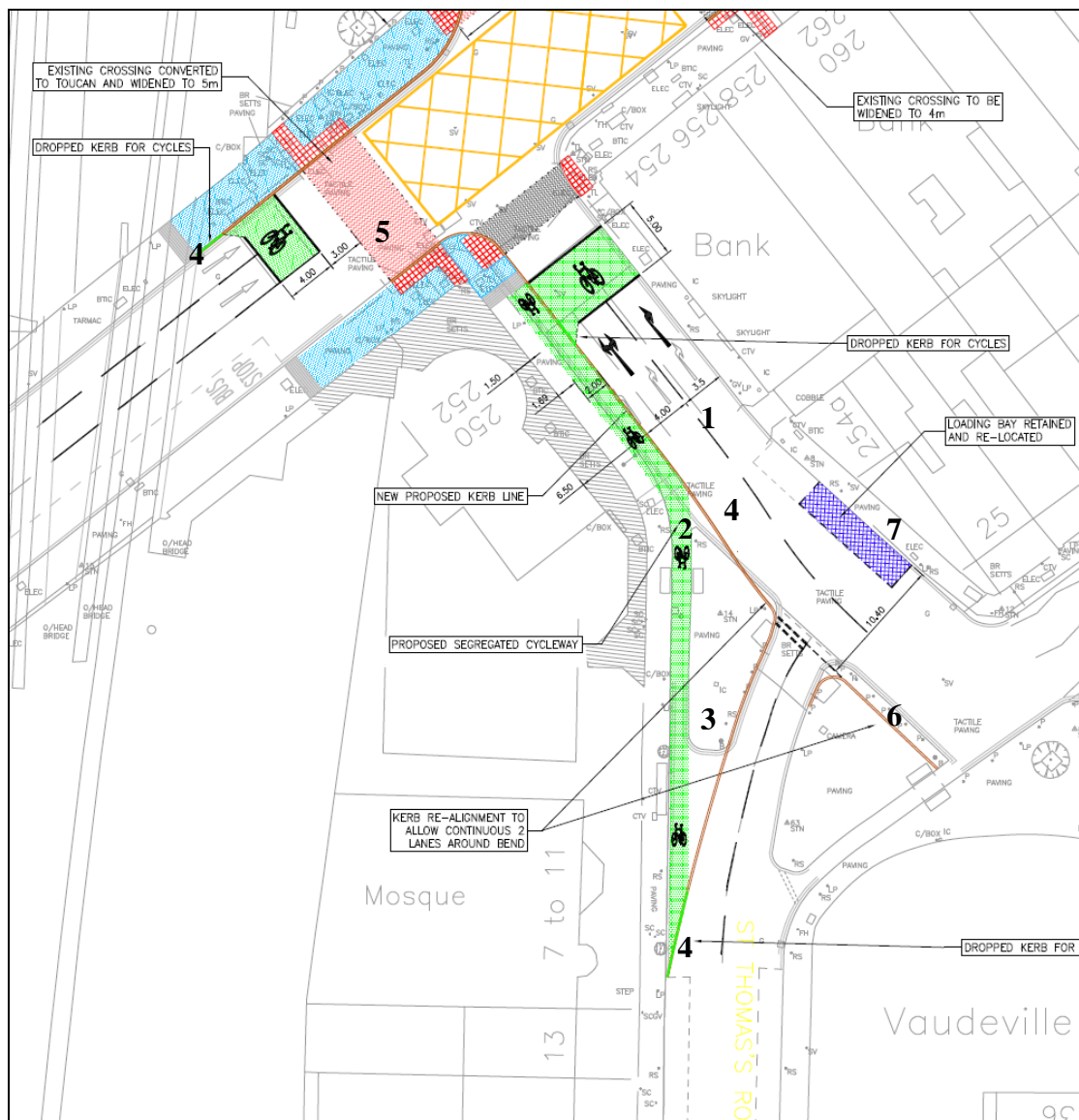


Key

- 1 St Thomas's Road reduced from three lanes of traffic to two
- 2 Two-way cycling on St Thomas's Road shared with pedestrians
- 3 Removal of existing northbound cycle lane
- 4 Dropped kerbs for cyclists
- 5 Widened pedestrian crossing at Seven Sisters Road to create a toucan crossing for cyclists and pedestrians
- 6 Re-alignment of carriageway to improve traffic flow on Rock Street / St Thomas's Road
- 7 Re-located loading bay to improve traffic flow

Changes to St Thomas's Road – Option C

As with option A this proposal reduces St Thomas's Road from three lanes of traffic to two. This space is used to provide a widened footway for a segregated cycle lane to allow north and southbound cycling.



Proposals

1. St Thomas's Road reduced from three to two lanes
2. Two-way segregated cycling on St Thomas's Road
3. Removal of existing northbound cycle lane
4. Dropped kerbs for cyclists
5. Widened pedestrian crossing at Seven Sisters Road to create a toucan crossing for cyclists and pedestrians
6. Re-alignment of carriageway to improve traffic flow on Rock Street / St Thomas's Road
7. Re-located loading bay to improve traffic flow